

# chapter

CENTRAL SUFFOLK • HAMPTONS • HUNTINGTON • NORTH FORK •  
SUFFOLK NORTH SHORE • SUFFOLK SOUTH SHORE



# HAMPTONS

## Leadership 2019

The Hamptons Chapter of LIBOR was formally reorganized in the Fall of 2012 to better serve the many REALTOR® members in this unique market. The Chapter encompasses some of Long Island's most appealing geography with world renown ocean beaches, farmland, boating and recreational opportunities. It's members service a residential market ranging from luxurious properties for sale and rental as well as primary and vacation homes and includes land sales for farming and wine production.

### members

central suffolk .....	1,256
hamptons .....	587
huntington .....	1,695
north fork .....	262
suffolk north shore .....	2,036
suffolk south shore .....	1,485

average number of  
annual chapter meetings ..... 10  
breakfast 4, lunch 1, evening 3, beach 1

average meeting attendants ..... 35

average number of attendees at annual  
suffolk divisional meeting event ..... 150



**ANNA GREENWALD**  
CHAPTER PRESIDENT  
South Fork Realty  
143 W. Montauk Highway  
Hampton Bays, NY 11946  
(631) 728-6565  
agreenwald@southforkrealty.com



**VINCENT FREZZO**  
PRESIDENT ELECT  
Douglas Elliman Real Estate  
2488 Main Street  
Bridgehampton, NY 11932  
(631) 537-5900  
Vincent.Frezza@elliman.com



**MARY BINDER**  
VICE PRESIDENT  
Douglas Elliman Real Estate  
14 W. Montauk Highway  
Hampton Bays, NY 11946  
(631) 723-2721 • mary.Binder@alliman.com



**JANICE HAYDEN**  
VP OF SPONSORSHIP  
Halstead Hamptons LLC  
31 Main Street  
Southampton, NY 11968  
(631) 771-5333 • jhayden@halstead.com



**PATRICIA BRADY**  
TREASURER  
Nest Seekers International LLC  
P.O. Box 742  
Bridgehampton, NY 11932  
(631) 353-3048 • patyb@nestseekers.com



**JOSEPH J PICCININNI JR**  
SECRETARY



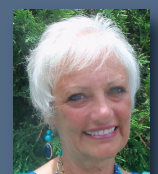
**KALEN RAYNOR**  
VP PUBLIC RELATIONS



**KYLE KELLY**  
EAST END LIAISON



**KEVIN LOIACONO**  
SUFFOLK VICE PRESIDENT



**DIANNE SCALZA**  
2019 LIBOR PRESIDENT

# geographically speaking...

## HAMPTONS CHAPTER

The Hamptons Chapter of the Long Island Board of Realtors®, Inc. (LIBOR) covers the area of eastern Suffolk County between Hampton Bays and Montauk. LIBOR members working in Quogue, Westhampton Beach, Bridgehampton, Southampton, East Hampton, Eastport, Sag Harbor, and towns in between, are members of the Hamptons Chapter.

## SUFFOLK NORTH SHORE CHAPTER

The Suffolk North Shore Chapter of the Long Island Board of Realtors®, Inc. (LIBOR) covers the area of Suffolk County between Hauppauge to Stony Brook. LIBOR members working in Centereach, Coram, Setauket, Farmingville, Lake Ronkonkoma, Port Jefferson, Smithtown, Selden, and several towns in between, are members of the Suffolk North Shore Chapter.

## CENTRAL SUFFOLK CHAPTER

The Central Suffolk Chapter of the Long Island Board of Realtors®, Inc. covers the area of Suffolk County between Sayville to Wading River. LIBOR members working in Center Moriches, Bohemia, Bayport, Bellport, Patchogue, Middle Island, Mastic, Shirley, and many towns in between, are members of the Suffolk Central Chapter.

## SUFFOLK SOUTH SHORE CHAPTER

The Suffolk South Shore Chapter of the Long Island Board of Realtors®, Inc. (LIBOR) covers the area of Suffolk County between Amityville and Islip. LIBOR members working in Babylon, Brentwood, Bay Shore, Farmingdale, Islandia, Lindenhurst, Wyandanch, Copiague, and several towns in between, are members of the Suffolk South Shore Chapter.

## HUNTINGTON CHAPTER

The Huntington Chapter of the Long Island Board of Realtors®, Inc. (LIBOR) covers the area of Suffolk County between Cold Spring Harbor and Northport. LIBOR members working in Centerport, Dix Hills, Huntington, Huntington Station, Melville, Commack, East Northport, and towns in between, are members of the Huntington Chapter.

## NORTH FORK CHAPTER

The North Fork Chapter of the Long Island Board of Realtors®, Inc. (LIBOR) covers the area of eastern Suffolk County between Riverhead and Orient. LIBOR members working in Aquebogue, Cutchogue, Greenport, Southold, Jamesport and towns in between, are members of the North Fork Chapter.

### REAL ESTATE MARKET DATA

2018 Long Island Median Home Price*	\$455,000
Nassau County Closed Median Home Price	\$520,000
Suffolk County Closed Median Home Price	\$375,000
Queens County Closed Median Home Price	\$570,000
LI Contracted (Pending) Median Home Price	\$460,000
LI 2018 Closed Sales Activity	38,799
LI 2018 Contracted Sales Activity	40,319

\*Long Island includes data from Nassau, Suffolk and Queens counties.

### ABOUT LIBOR

Since 1910 the Long Island Board of Realtors® Inc., (LIBOR) has been the voice of Long Island Real Estate. We represent over 25,000 Realtor members and over 290 Affiliated business members.

For more information on how to get involved contact Mike Miller, Business Development Manager, 631-661-4800 x384 or [mmiller@lirealtor.com](mailto:mmiller@lirealtor.com).

**HAMPTONS.LIREALTOR.COM**